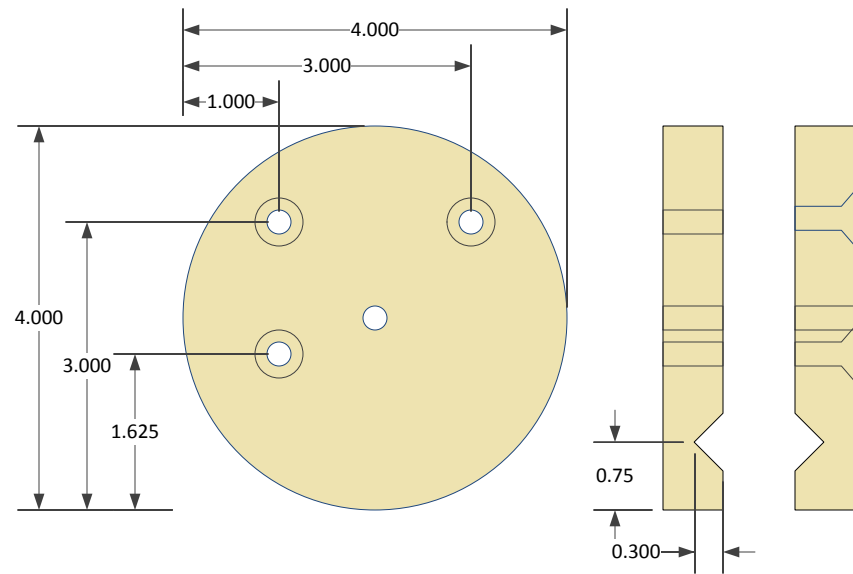
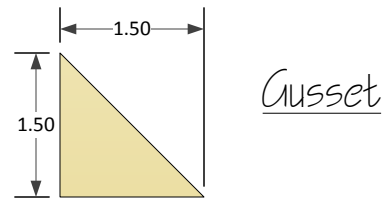


Travel6

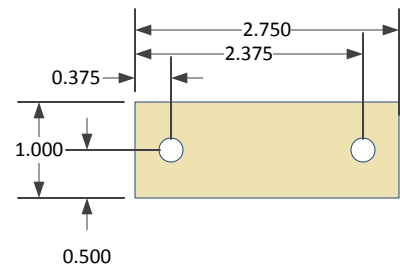
6" f/ 5 Portable Newtonian Telescope
Andrew Cooper 14Aug2015 Page 1



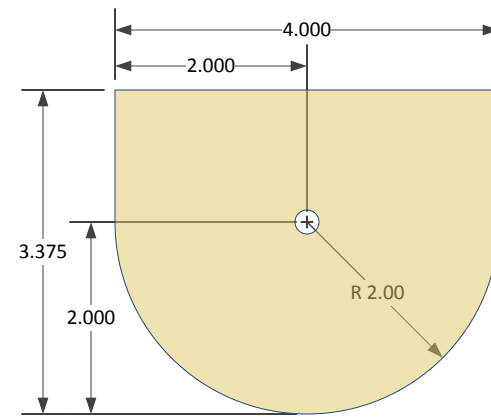
Round cut with 4.125
hole saw for finished
4" diameter
Drill 1/4"
Clamp
1 piece countersunk for 1/4-20
flat head where shown



Gusset

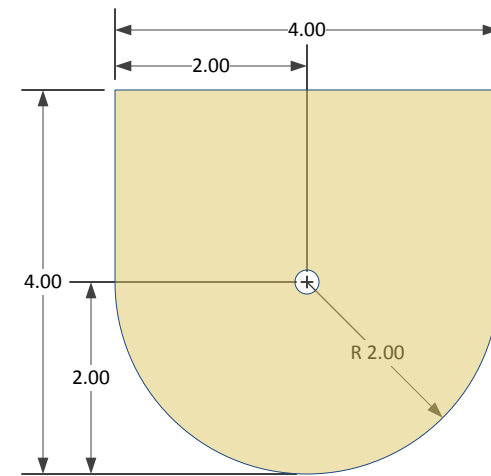


Spacer
Drill 1/4"



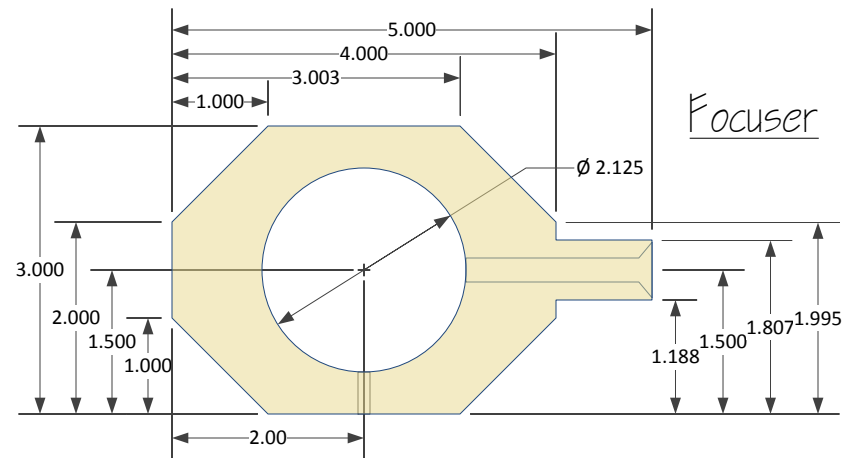
Lower Plate

Drill 1/4"

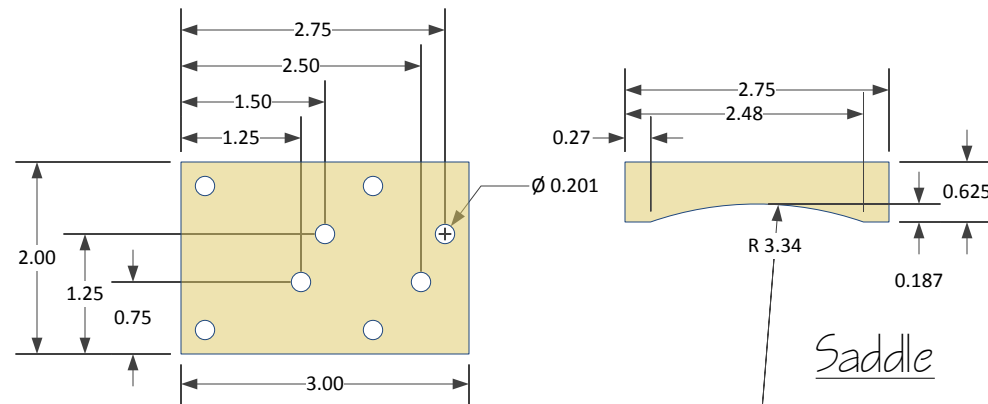


Side Plate

Drill 1/4"



Focuser



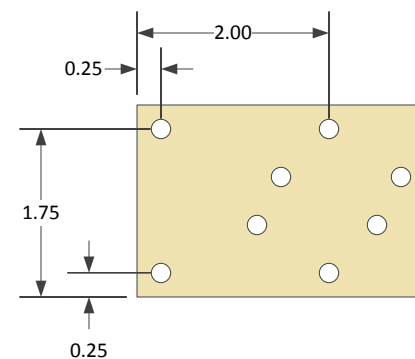
Saddle

Notes:

- > All parts 5/8" birch plywood or similar high quality plywood
- > Glue the lower and side plate together with a waterproof wood glue
- > Glue the spacer to the inner clamp disk with a waterproof wood glue
- > All parts sanded, sealed with an oil based stain/preservative and finished with polyurethane

Notes:

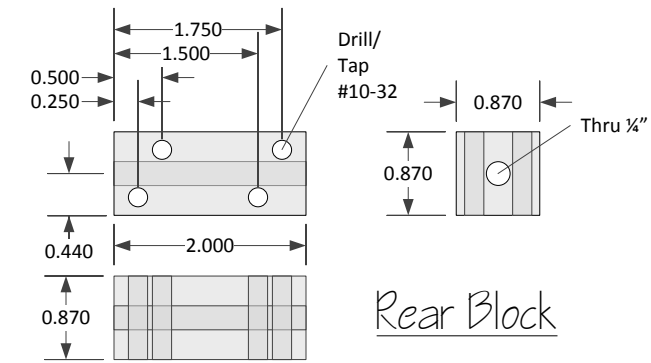
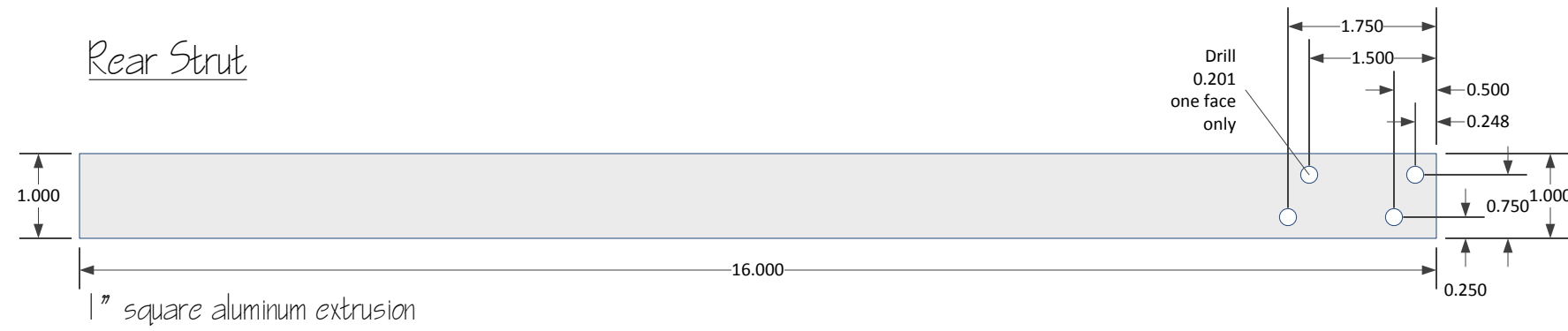
- > The eyepiece hole is shown for a diameter of 2.125" to allow for the eyepiece holder insert (a machined aluminum part). The hole can be drilled for 2.0" if no insert is to be used.
- > To reinforce the part a 1/4" flat head bolt is to be epoxied into the stem after finishing



Travel6

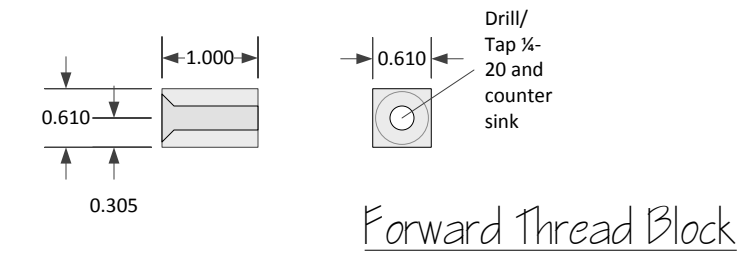
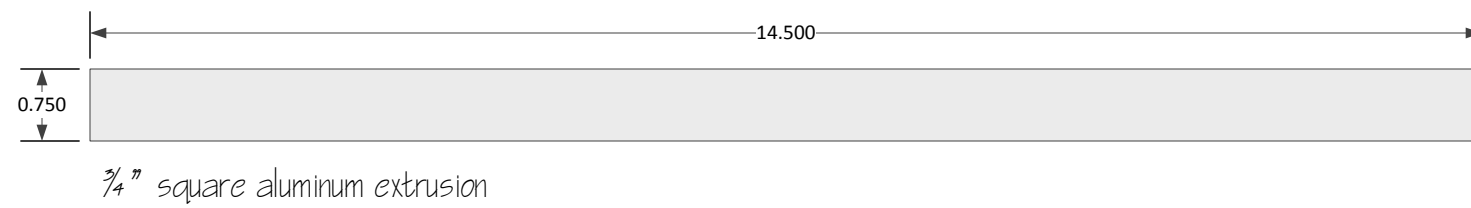
6" f/5 Portable Newtonian Telescope
Andrew Cooper 14Aug2015 Page 2

Rear Strut



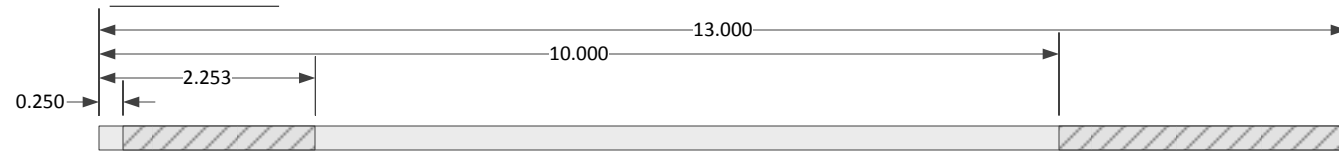
Rear Block

Forward Strut



Forward Thread Block

Focus Rod

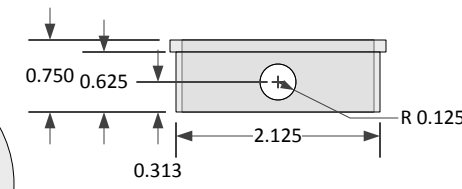
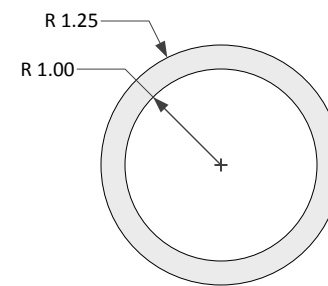
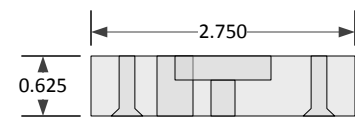
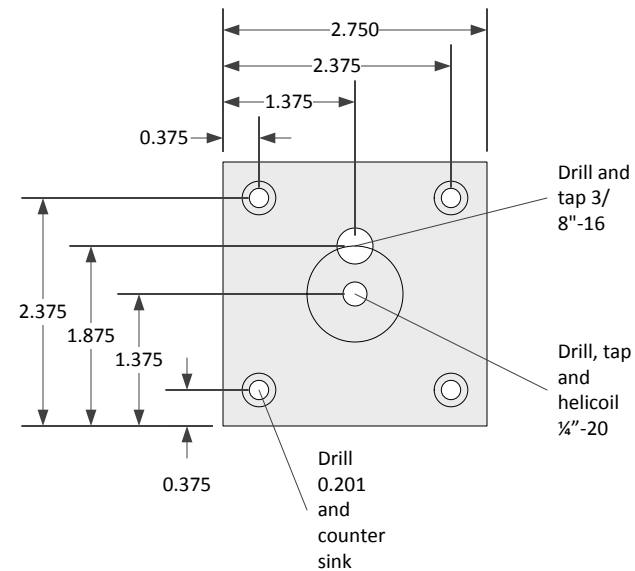


1/4-20 stainless threaded rod
Thread removed where shown

Notes:

> Sizes of the forward and rear blocks may require adjustment based on wall thickness of the square aluminum extrusions, sized for neat fit inside the extrusion

Tripod Plate



Eyepiece Holder

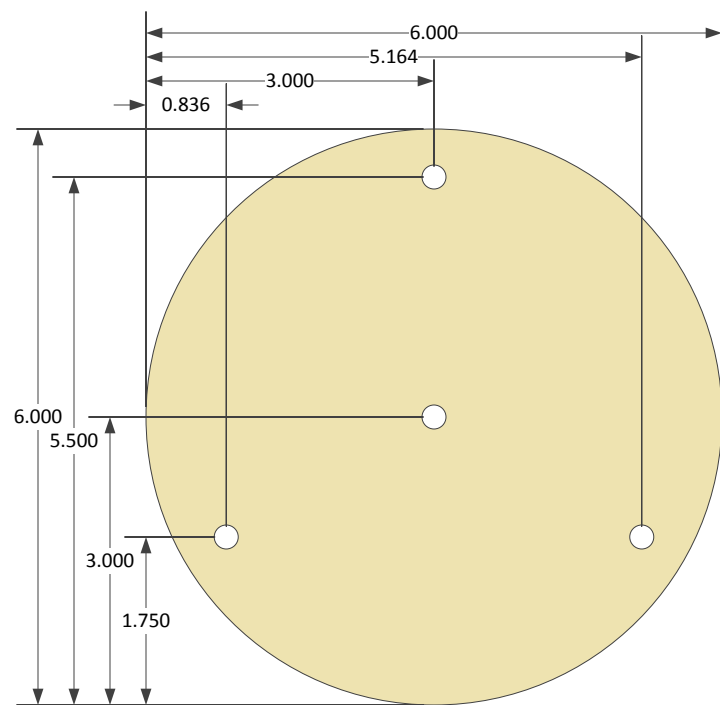
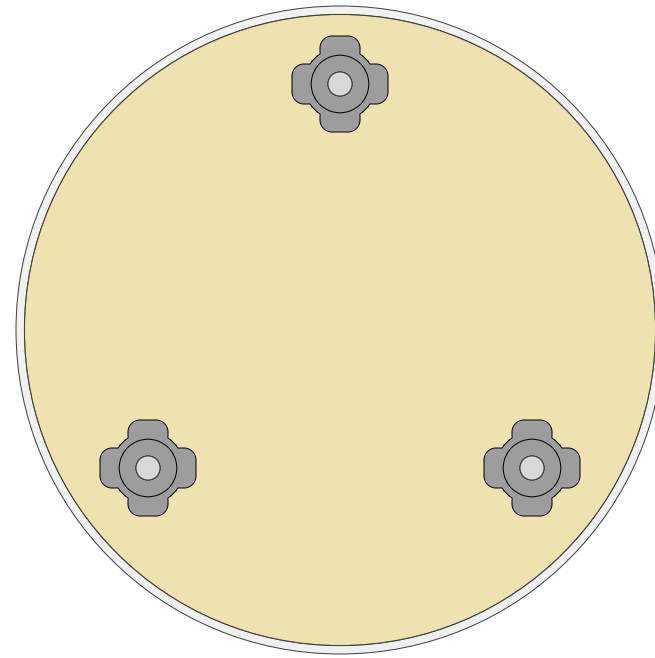
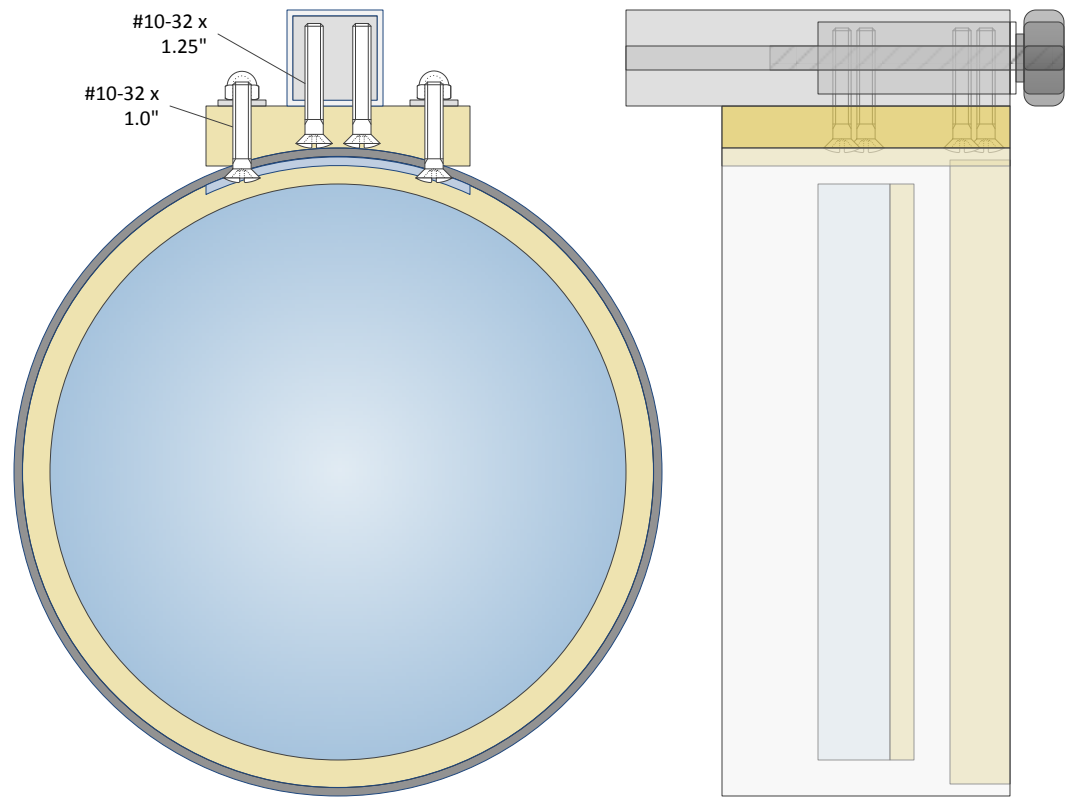
Travel6

6" f/5 Portable Newtonian Telescope
Andrew Cooper 14Aug2015 Page 3

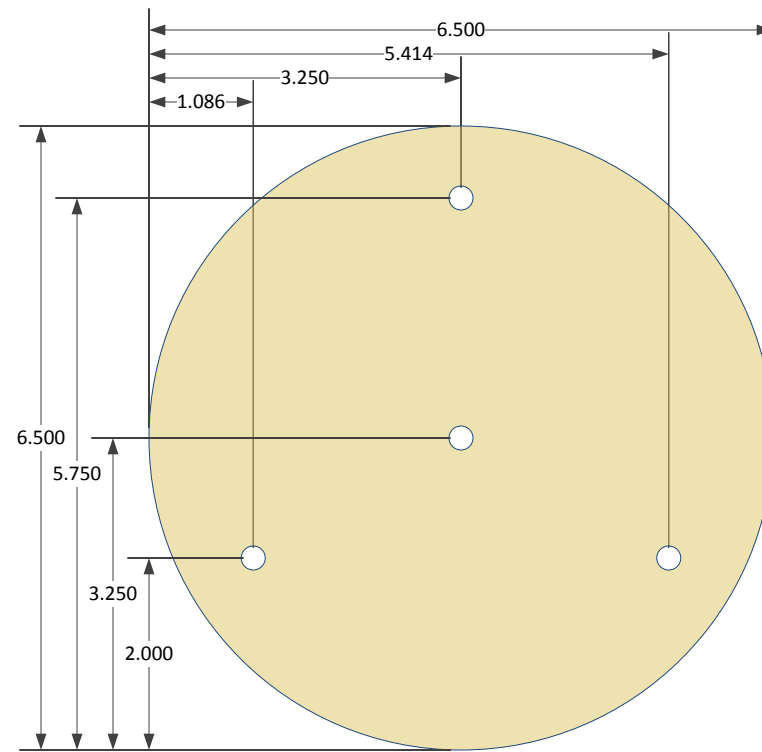
Saddle Assembly

Notes:

> The center hole in the mirror mount and cell plate is optional, this may be used as an aid to cutting the parts



Mirror Mount
1/4" Birch Plywood

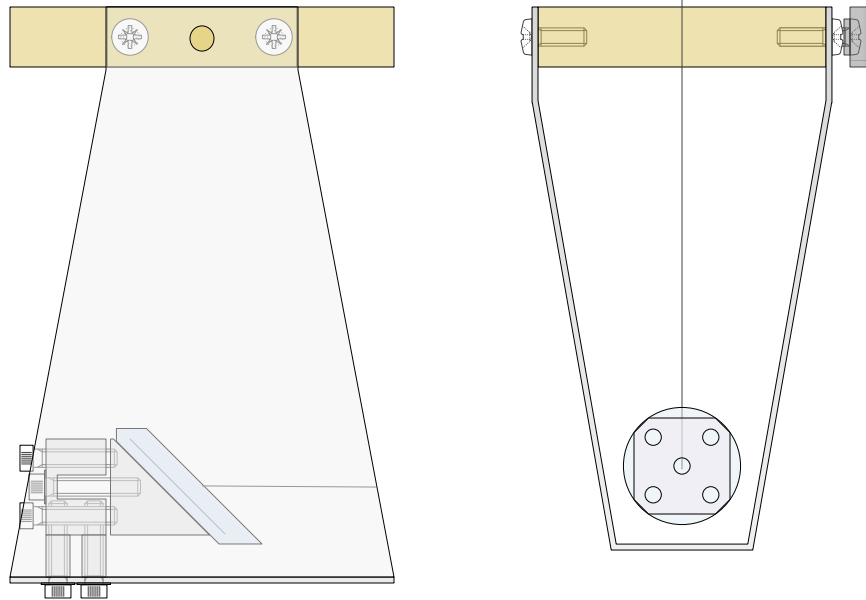


Cell Plate
5/8" Birch Plywood

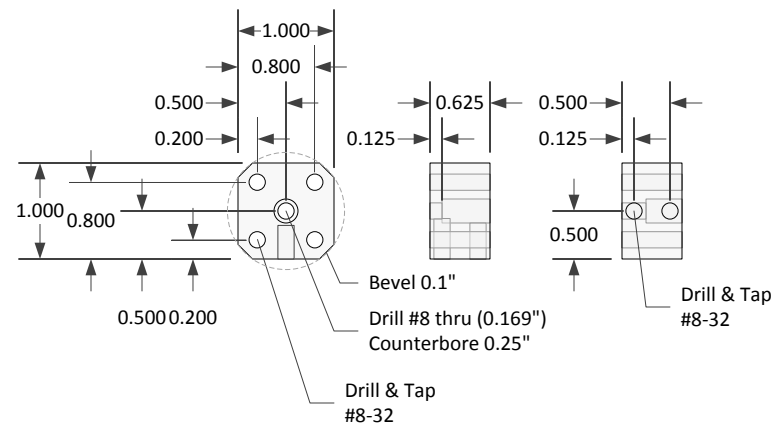
Travel6

6" f/5 Portable Newtonian Telescope
Andrew Cooper 14Aug2015 Page 4

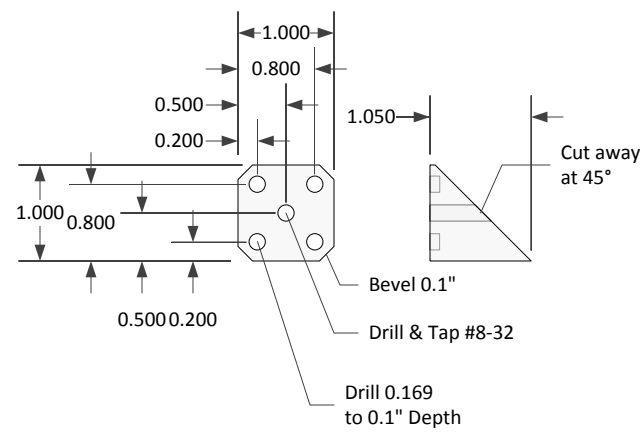
Secondary Assembly



- Notes:
- > Secondary vertical position adjusted with the height of the #8 standoffs
 - > Secondary horizontal position adjusted by slotted holes in vane assembly
 - > Painted ultra-flat black
 - > Interior flocked with velvet paper

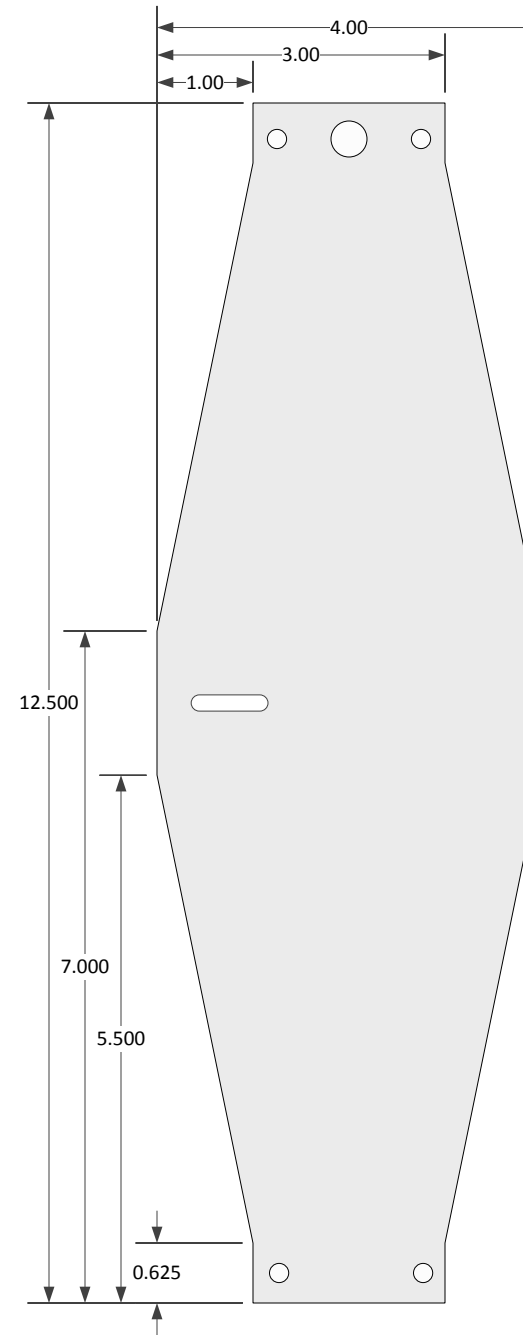


Mount



Wedge

- Notes:
- > Mount and wedge machined as a single piece then cut apart
 - > Beveled at 0.1" to fit within the circle covered by a 31mm secondary mirror



Travel6

6" f/5 Portable Newtonian Telescope
Andrew Cooper 14Aug2015 Page 5